

PROAIM Swift Camera Track Dolly System (SWFT-DL)

Assembly Manual



■ What's In The Box

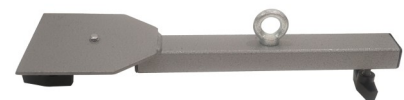
Please inspect the contents of your shipped package to ensure you have received everything that is listed below.



Swift Dolly with Wheels attached



14" Central Support System



15" Camera Mounting Post



Bag Packing

All rights reserved.

No part of this document may be reproduced, stored in a retrieval system, or transmitted by any form or by any means, electronic, mechanical, photo-copying, recording, or otherwise, except as may be expressly permitted by the applicable copyright statutes or in writing by the Publisher.

Swift Dolly Setup

- Remove the lock knob from the 27" central section and connect the 32" dolly rods to give it a triangular shape. Attach the 27" rod to the wheel set and tighten the knob to secure.



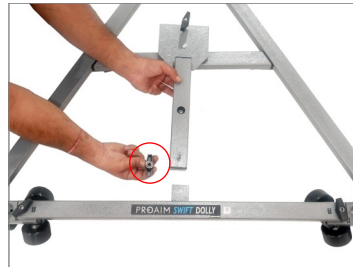
- Loosen the lock knob from the 32" rods of the dolly section, connect with 27" of central area, and tighten the knob to secure.



- Attach the 14" central support system rod to the base and tighten the screws to secure it.



- Attach a 15" camera mounting post to the base and tighten the screws as shown in the images.



- Place the dolly on the tracks as shown in the image.



**YOUR PROAIM SWIFT CAMERA TRACK DOLLY SYSTEM
ALL DRESSED UP AND READY TO GO!**



(SHOWN WITH OPTIONAL ACCESSORIES)

Warranty: We offer one year warranty for our products from date of purchase. Within this period of time, we will repair it without charge for labor or parts. Warranty doesn't cover transportation costs nor does it cover a product subjected to misuse or accidental damage. Warranty repairs are subjected to inspection and evaluation by us.

Liability: We are not liable for damage caused by products that we do not supply or from mishandling in transit, accident, misuse, neglect, lack of care of the product, or service by anyone other than our company.

Contact Us: In case of any kind of dissatisfaction, please Contact us immediately and we promise our utmost support and care until you use our product.