

Canon

EOS 7D  
Mark II



FUEL YOUR CREATIVE PASSION

# BRING YOUR IMAGINATION TO REALITY

Optimized to help make even the most challenging photographic situations effortless, Canon's EOS 7D Mark II camera has a winning combination of cutting-edge operations and a robust, ergonomic design. A newly designed 20.2 Megapixel APS-C CMOS sensor, Dual DIGIC 6 Image Processors – plus a host of new and refined capabilities make the EOS 7D Mark II the perfect camera to bring your imagination to reality.



## EOS 7D Mark II Features

- 20.2 Megapixel CMOS (APS-C) Sensor
- ISO 100–16000  
(expandable to H1: 25600, H2: 51200)
- Dual DIGIC 6 Image Processors
- Up to 10.0 fps Continuous Shooting
- 65-point\* All Cross-type AF
- Dual Pixel CMOS AF
- Full HD Video at 60p
- Movie Servo AF with customization
- Uncompressed HDMI
- Intelligent Viewfinder II
- Improved Custom Control
- Built-in Intervalometer & Bulb timer
- Magnesium alloy body
- EOS Scene Detection Systems
- Built-in GPS\*\*
- 3.0-inch Clear View II LCD monitor
- Dual card slots for CF and SD cards

\* The number of available AF points, and whether single line or cross-type, varies depending on the lens.

\*\* In certain countries and regions, the use of GPS may be restricted. Therefore be sure to use GPS in accordance with the laws and regulations of your country or region. Be particularly careful when traveling outside your home country. As a signal is received from GPS satellites, take sufficient measures when using in locations where the use of electronics is regulated.

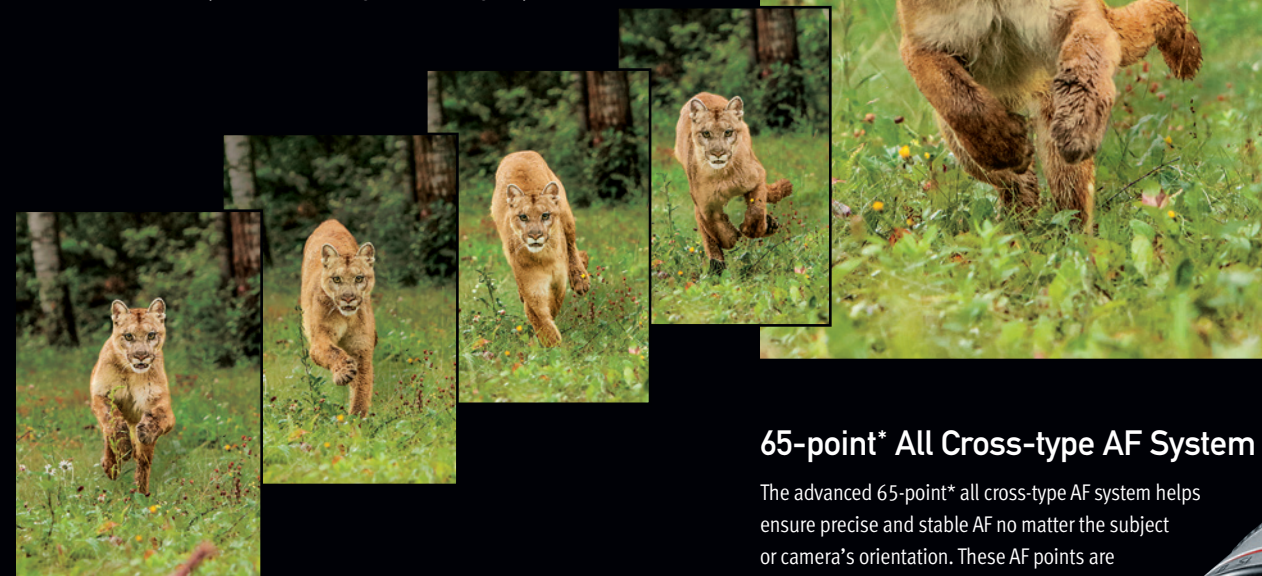


# SPEED

High Speed & Intuitive Operation  
at Your Fingertips

## Up to 10.0 fps Continuous Shooting

A new, rugged shutter designed for 200,000 cycles, enables the EOS 7D Mark II to shoot up to 10.0 frames per second to capture all the action. Refined mechanics like a newly designed, more efficient shutter drive motor and a vibration dampened mirror drive help deliver reliable, speedy performance for high caliber image capture.



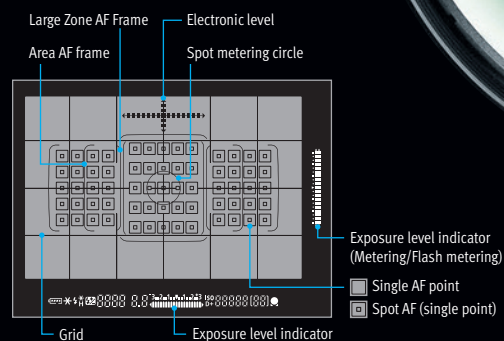
© Adam Jones

## Enhanced AF & Exposure

Canon's Intelligent Tracking and Recognition system (iTR AF) detects and tracks subjects, automatically switching the AF point to optimize tracking. New tracking algorithms are tailored to recognize faces and colors, which makes the EOS 7D Mark II's advanced predictive Ai Servo AF III so effective (Ai Servo AF III assists in tracking subjects continuously as they move to keep them constantly in focus). It also has an Intelligent Subject Analysis (ISA) system that employs an independent RGB+IR light sensor with approximately 150,000-pixel resolution. This new sensor not only provides a finer level of accuracy, but when combined with iTR AF, the EOS 7D Mark II can track subjects with a significantly greater level of success. The RGB+IR sensor also enables infrared-light detection and a flicker detection system that compensates for flickering light sources, taking shots only at peak light volume.

## 65-point\* All Cross-type AF System

The advanced 65-point\* all cross-type AF system helps ensure precise and stable AF no matter the subject or camera's orientation. These AF points are spread over a wide area of the frame, enabling faster AF wherever the subject lies. With a central dual cross-type AF point of f/2.8, AF is enhanced with lenses faster than f/2.8. Also, this new system makes AF possible in dim lighting as low as EV-3.



\*The number of available AF points, and whether single line or cross-type, varies depending on the lens.

# IMAGE QUALITY

Sophisticated Technology for Stunning Results

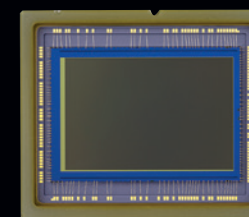
## Dual DIGIC 6 Image Processors

The Dual DIGIC 6 Image Processors work seamlessly with the new 20.2 Megapixel sensor for supercharged processing across the board. These processors help the EOS 7D Mark II capture up to 1090 JPEG/LARGE, 31 RAW, and 19 RAW+JPEG shots\*\* in a single burst for amazing action photography. They also enable the camera's powerful image processing on-the-fly: lens aberration, variances in peripheral illumination, and image distortion can all be corrected in real time with the Dual DIGIC 6 Image Processors.



## Extensive ISO Range

Optimized for low-light shooting, the EOS 7D Mark II's sensor captures images at up to ISO 16000 (expandable to H1: 25600 and H2: 51200). This is because of an improved higher sensitivity photodiode construction, CMOS circuitry, and color filters with higher light transmittance. As a result, the EOS 7D Mark II records both still and moving images at higher ISO speeds with remarkably low noise, making excellent low-light photography and moviemaking possible.



CMOS Sensor (actual size)

## 20.2 Megapixel CMOS Sensor

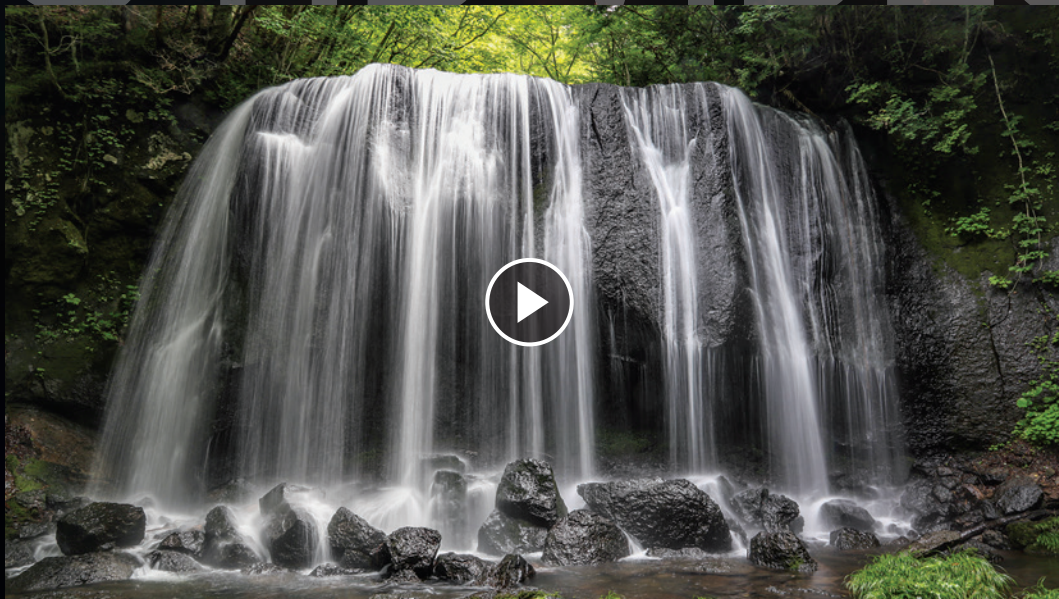
A brand new 20.2 Megapixel sensor helps record high-resolution image files with stunning detail. Redesigned specifically for the EOS 7D Mark II, this impressive sensor captures a new level of clarity with low noise and high sensitivity. Phenomenal for stills, the camera's sensor is equally impressive for movies, offering Canon's revolutionary Dual Pixel CMOS AF for impressive and smooth AF performance.



\*\*Figures apply to a UDMA mode 7, CF card based on Canon's testing standards.

# EOS HD VIDEO

Stunning Cinematic Full HD Video



## Dual Pixel CMOS AF

Canon's revolutionary Dual Pixel CMOS AF enables superb HD shooting with the EOS 7D Mark II. With Dual Pixel CMOS AF, each pixel on the camera's sensor performs both phase-difference detection autofocus and records light. Auto-focus is achieved quickly, easily and smoothly thanks to phase-difference detection AF. When used with the predictive power of Movie Servo AF, subjects in motion are smoothly and consistently tracked – once focus is locked, the EOS 7D Mark II stays on target!

**Dual Pixel CMOS AF**

## Full HD 60p Video Recording

The EOS 7D Mark II delivers refined and detailed EOS movie image quality with Full HD 60p (59.94 fps NTSC), and 50.00 fps (PAL), recording at ISO values up to 16000 (Dual Pixel CMOS AF is not available when shooting at 60p). At these frame rates, even a fast-moving subject looks smooth in HD, as does a slow motion playback.

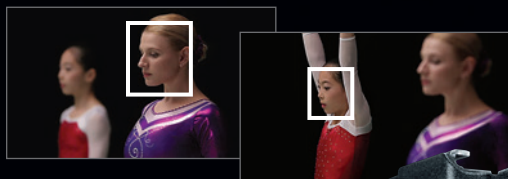
**FULL HD 1080**

## Multiple Input / Output Options

Shoot Full HD and send uncompressed NTSC, PAL and 24p footage out directly using the EOS 7D Mark II's included HDMI port. HDMI output makes it possible to monitor images on a large display or save image data to an external recorder. Thanks to an audio output function, video and sound can be recorded together to a single recorder. The EOS 7D Mark II also has dedicated microphone and headphone jacks for professional sound recording and monitoring. Dual card slots for CF and SD cards are also included, offering many options and long recording times with automatic switching between recording media.

## Movie Servo AF with Customization

Taking advantage of its Dual Pixel CMOS AF capabilities, the EOS 7D Mark II has a new customizable Movie Servo AF system. AF points, AF speed, and tracking interval can all be manually specified and tailored to the particulars of the subject's actions for continuous, smooth focus transitions. Customizable AF parameters give videographers more creative control, and opens up opportunities to create their videos just they way envision.



**Movie Servo AF speed Adjustable 5 steps**

- Standard
- Slow (1)
- Slow (2)
- Slow (3)
- Slow (4)



## Improved Custom Control

An array of custom controls and menu options are available, including several featured for the first time on an EOS camera. AF shooting functions can be tailored to the preferences of the photographer and include AF point choice, flash operation, exposure controls and more. Features and options that were once embedded in menus can be accessed by a touch of a button with the new AF select lever that's easily accessible during shooting.

## Approximately 100% Coverage Viewfinder & 3.0-inch Clear View II LCD monitor

The Intelligent Viewfinder II displays approximately 100% of the composition and can show a range of settings around the image or superimposed over top for reviewing while shooting. The display is also customizable through the camera's user interface. A high-resolution 3.0-inch Clear View II LCD monitor with approximately 1.04 million dots is bright and sharp for convenient viewing. Composition and review is tailored to the user with scalable fonts. The monitor's improved low reflection, high contrast surface, and scratch-resistant glass with an anti-smudge coating ensure bright, crisp and easy review.

## Refined Design for Better Control



## Diverse Range of Lenses for a Variety of Creative Expression

Compatible with Canon's amazing collection of EF and EF-S lenses, the EOS 7D Mark II provides an incredibly wide range of creative opportunities for both still image and Full HD Video capture. For users who enjoy shooting Full HD video, the EOS 7D Mark II works brilliantly with Canon's STM lenses. STM lenses feature built-in stepping motors that enable smoother and quieter AF than many traditional lenses. These lenses are virtually silent for video shooting, leaving minimally distracting AF operation sounds on recordings.

## Rugged Construction

With a new magnesium alloy chassis, the EOS 7D Mark II is both strong and comfortable to hold, and has impressive dust and water resistance. It features a new, rugged shutter designed for up to 200,000 cycles that incorporates both a newly designed and more efficient shutter drive motor, plus a vibration dampened mirror drive for faster action.



## Built-in GPS

Built-in GPS conveniently records latitude, longitude, elevation and UTC time. It also has a Time Sync Function and a digital compass that records the camera's orientation when shooting. This feature is especially beneficial for users who shoot nature and travel photography.

## Built-in Interval & Bulb timer

Time-lapse fixed-point shooting and long exposures are possible without the need for a remote control. The EOS 7D Mark II's interval timer takes from 1 to 99 shots at preselected intervals, while the bulb timer keeps the shutter open for a designated amount of time. These built-in features make it simple, easy and convenient to achieve creative imagery without the need to purchase additional accessories.



Bulb timer shooting

# Specifications

## Autofocus System

TTL secondary image-registration, phase-difference detection with the dedicated AF sensor

## Image Processor / Image Sensor

Dual DIGIC 6 / 22.4 x 15.0mm, CMOS Sensor with Auto Sensor Cleaning

## Crop Factor

1.6x (APS-C)

## Special Features

• 20.2 Megapixel CMOS sensor • Built-in 3.0" Clear View II LCD monitor (approx. 1,040,000 dots) • Built-in GPS technology • 18 custom functions in 5 groups • Dual Pixel CMOS AF • Simultaneous RAW + JPEG image capture • Intelligent Viewfinder II Display • Multiple Aspect Ratios • FE Lock • Feature Guide • Basic+ • High Dynamic Range • Multiple Exposures • Creative Filters with real-time display • Full HD Video Movie Servo AF • All-I or IPB Compression • EOS Scene Detection Technology, Scene Intelligent Auto and Picture Style Auto • In-camera RAW image processing • Star Rating System • SuperSpeed USB (USB 3.0) compatible • Lens Aberration Correction • Dual card slots for CF and SD cards • EOS iTR AF with 150,000-pixel RGB+IR metering sensor

## Video Recording Size

1920 x 1080 (Full HD): 60p (59.94) / 50p / 30p (29.97) / 25p / 24p (23.98), 1280 x 720 (HD): 60p (59.94) / 50p, 640 x 480 (SD): 30p (29.97) / 25p

## Number of Focusing Points

65; Each AF point has cross-type sensors; Center AF point is dual high-precision cross-type sensor with f/2.8 or faster lenses

## ISO Range\*

(Still + Movie) Standard ISO 100-16000  
Still: (H1: 25600, H2: 51200)  
Movie: (H: 25600)

## Recording Media

CF Cards (Type I); Compatible with UDMA CD cards; SD, SDHC, and SDXC Memory Cards

## Maximum Frames Per Second

Single, 10.0 fps, 3.0 fps (low-speed), 4.0 fps (silent continuous)

## Shutter Speeds

30–1/8000 sec. & Bulb, manually settable in 1/3- or 1/2-stop increments

## Autofocus Sensitivity

Center AF Point: EV -3 to 18 (at ISO 100)

## Autofocus Auxiliary Light Built-in

Yes (via built-in flash)

## Shutter

Vertical-travel, mechanical, focal-plane shutter with all speeds electronically controlled

## Maximum Flash Synchronization Speed

Up to 1/250 sec.; high-speed sync. available with EX-series Speedlite flashes

## Metering System

TTL full aperture metering; • 252-zone Evaluative metering • 6% Partial metering • 1.8% Spot metering • Center-weighted average metering

## Metering Sensitivity

EV 0–20 (at room temperature, ISO 100)

## Exposure Compensation

+5 stops in 1/3 or 1/2-stop increments

## Flash Exposure Compensation

Up to +3 stops in 1/3 or 1/2-stop increments

## AE Lock

Yes

## Exposure Modes

• Scene Intelligent Auto • Program AE (shiftable) • Shutter Speed-priority AE • Aperture-priority AE • Manual Exposure • Bulb

## Viewfinder

Fixed eye-level pentaprism

## Viewfinder Coverage

Approx. 100% horizontal/vertical at 1x

## Viewfinder Information

Inside the picture area: Sixty-five focusing points, 1.8% Spot metering circle, Compositional Grid. Displayed at the bottom of the viewing area: Numeric and textual information with 7-segment LCD

• Shooting Mode • White Balance • Drive Mode • AF Operation • Metering Mode • Recording Format • Warning Symbol • Flicker Detection • Focus Confirmation • Electronic Level • Exposure Level (metering value) • Exposure Level (selected value)

## Focusing Screens

Interchangeable Eh-A Standard Focusing Screen

## Self-Timer

Electronically controlled with 2- or 10-second delay

## Body Dimensions (W x H x D)

Approx. 5.85 x 4.43 x 3.08 in. / 148.6 x 112.4 x 78.2mm

## Weight (CIPA standards)

Approx. 32.10 oz. / 910g, 29.92 oz / 820 g (Body Only)

# Canon

1-800-OK-CANON  
[usa.canon.com/eos](http://usa.canon.com/eos)


Canon U.S.A., Inc.  
One Canon Park  
Melville, NY 11747 U.S.A.


Canon Hollywood  
Professional Technology and Support Center  
6060 Sunset Boulevard  
Los Angeles, CA 90028 U.S.A.


Canon Canada, Inc.  
6390 Dixie Road  
Mississauga, Ontario L5T 1P7 Canada

Canon Latin America, Inc.  
703 Waterford Way, Suite 400  
Miami, FL 33126 U.S.A.

Canon Mexicana, S. de R.L. de C.V.  
Blvd. Manuel Ávila Camacho No. 138, Piso 17  
Col. Lomas de Chapultepec  
C.P. 11000 México, D.F. México

 See what's new on a daily basis, and more.  
[facebook.com/CanonUSA](http://facebook.com/CanonUSA)

 Stay up to date on the latest videos from Canon.  
[youtube.com/CanonUSA](http://youtube.com/CanonUSA)

 Follow us for news, product launches, events and more.  
[twitter.com/CanonUSAimaging](http://twitter.com/CanonUSAimaging)

Certain images and effects simulated. All data is based on Canon's Standard Test Method. Specifications and availability are subject to change without notice. Weight and dimensions are approximate. Not responsible for typographical errors.

©2014 Canon U.S.A., Inc. All right reserved. Canon, DIGIC, the DIGIC logo and EOS are registered trademarks of Canon Inc. in the United States and may also be registered trademarks or trademarks in other countries. Facebook is a trademark of Facebook Inc. YouTube is a trademark of Google Inc. Twitter is a registered trademark of Twitter, Inc.

Canon makes no representations or warranties with respect to any third party accessory or product mentioned herein.

Use of genuine Canon accessories is recommended; these products are designed to perform optimally when used with genuine Canon accessories.

Warning: Unauthorized recording of copyrighted materials may infringe on the rights of copyright owners and be contrary to copyright laws.

0189W770 09/14  
PRINTED IN U.S.A.